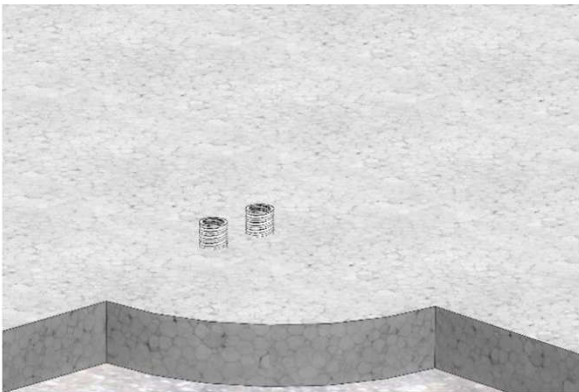
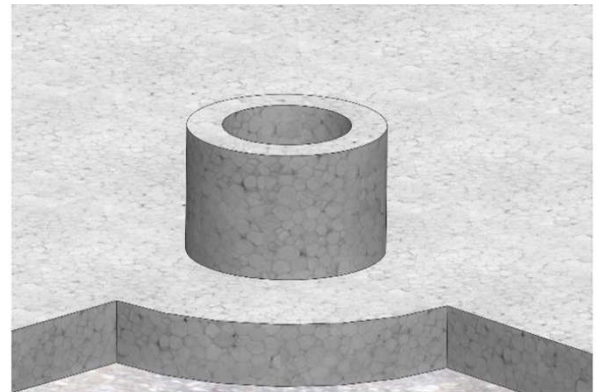


# Montageanleitung

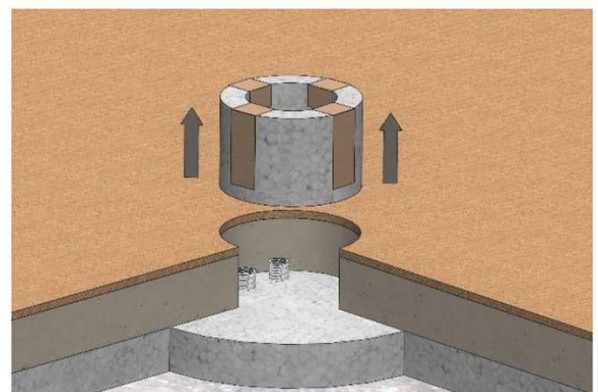
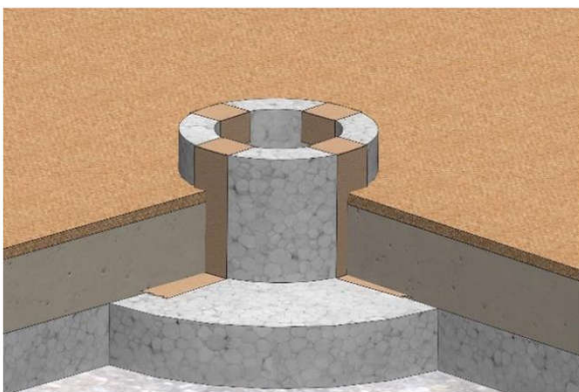
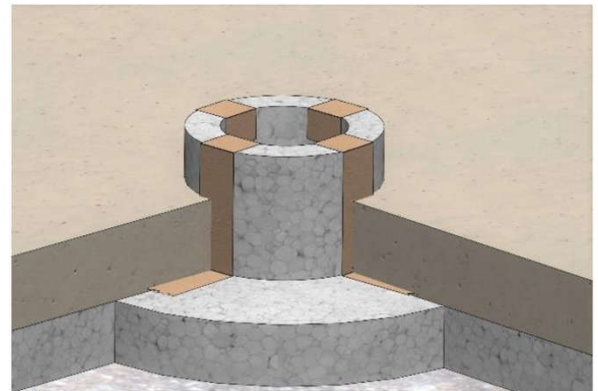
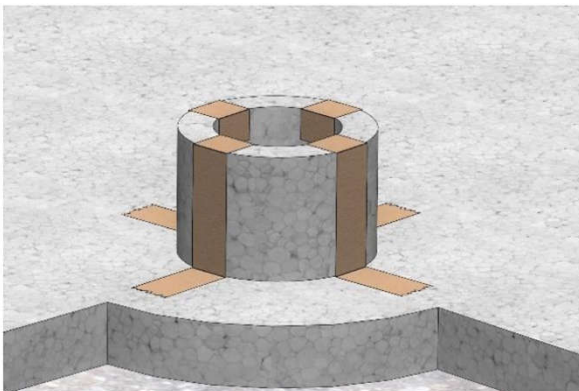
## 9902-D Variante 1: Estrichboden



Die Kabel können seitlich oder von unten zugeführt werden (Darstellung: unten)

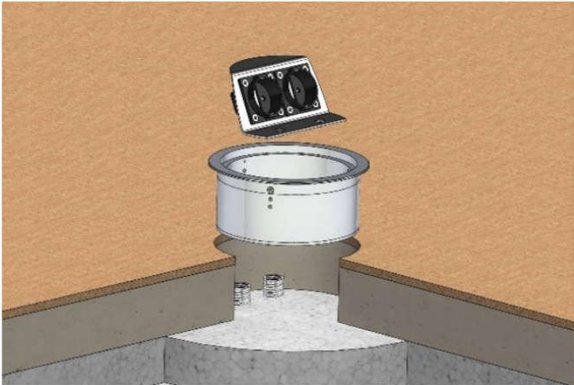


Styroporblock  
ca. Durchmesser 152mm x Höhe 100mm

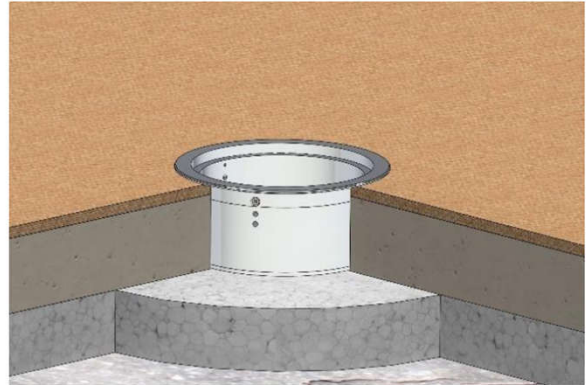


# Montageanleitung

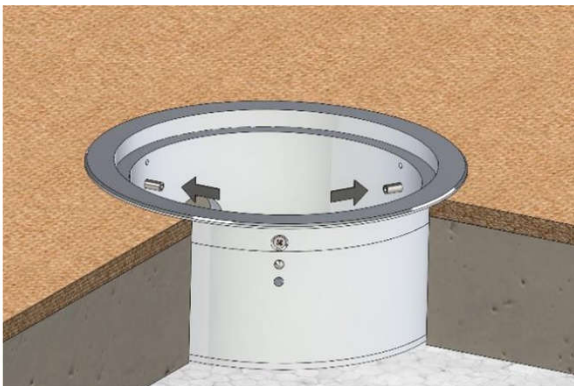
## 9902-D Variante 1: Estrichboden



Geräteträger aus Dose herausnehmen



Dose mit den Stiftschrauben verankern



Geräte anschließen  
Geräteträger festschrauben

