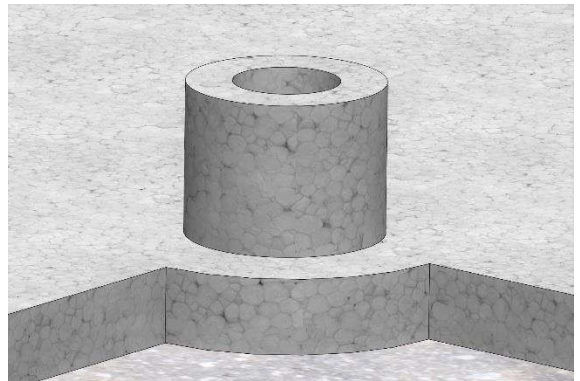


Montageanleitung

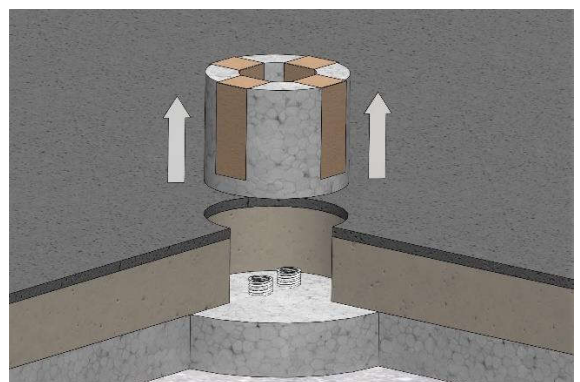
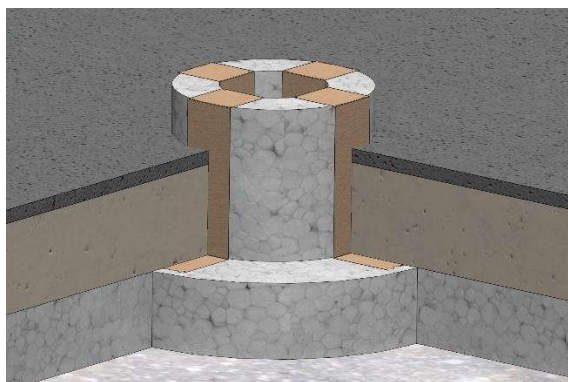
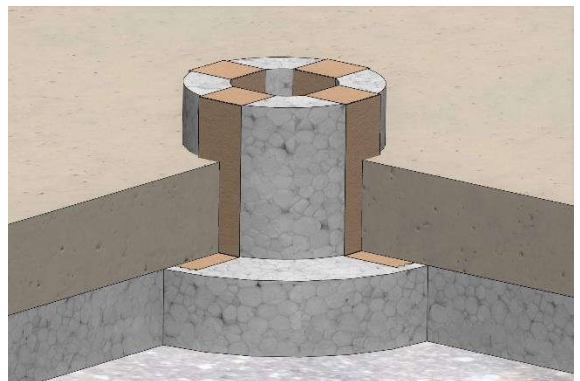
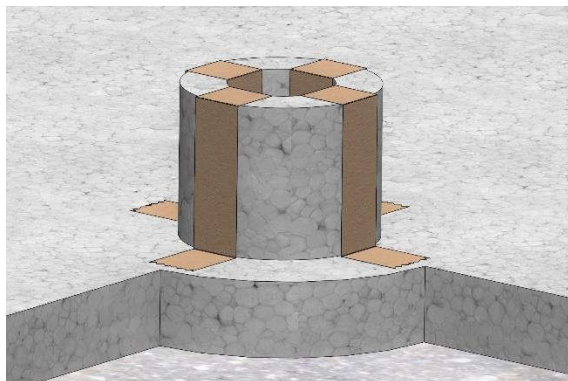
8602-A



Die Kabel können seitlich oder von unten zugeführt werden (Darstellung: unten)

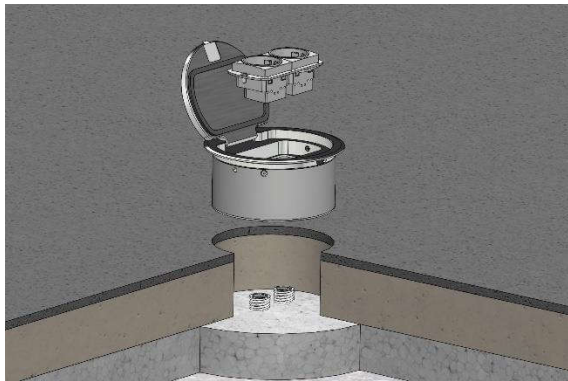


Styroporblock
ca. Durchmesser 132mm x Höhe 100mm

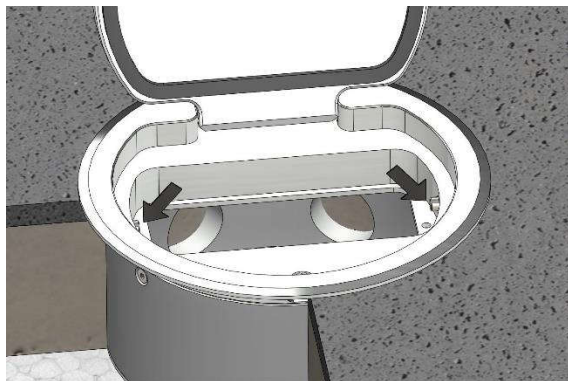
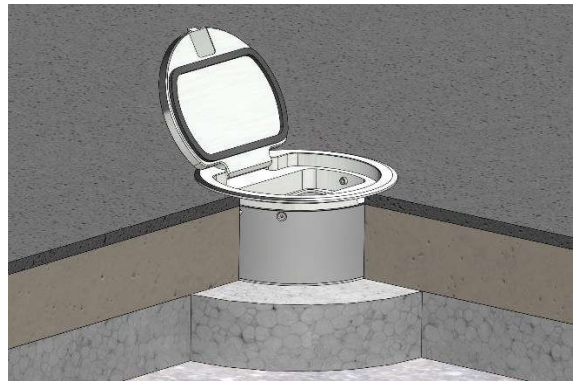


Montageanleitung

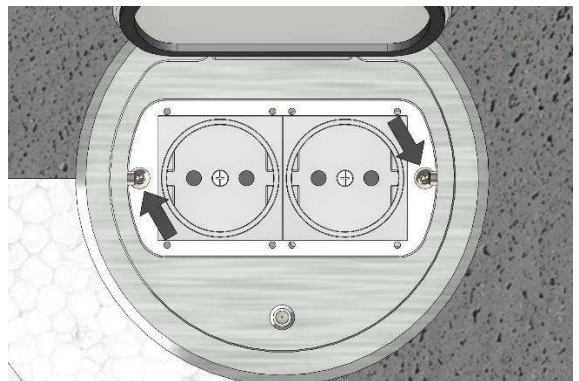
8602-A



Geräteträger aus Dose herausnehmen



Dose mit Stiftschrauben verankern



Geräte anschließen
Geräteträger festschrauben

